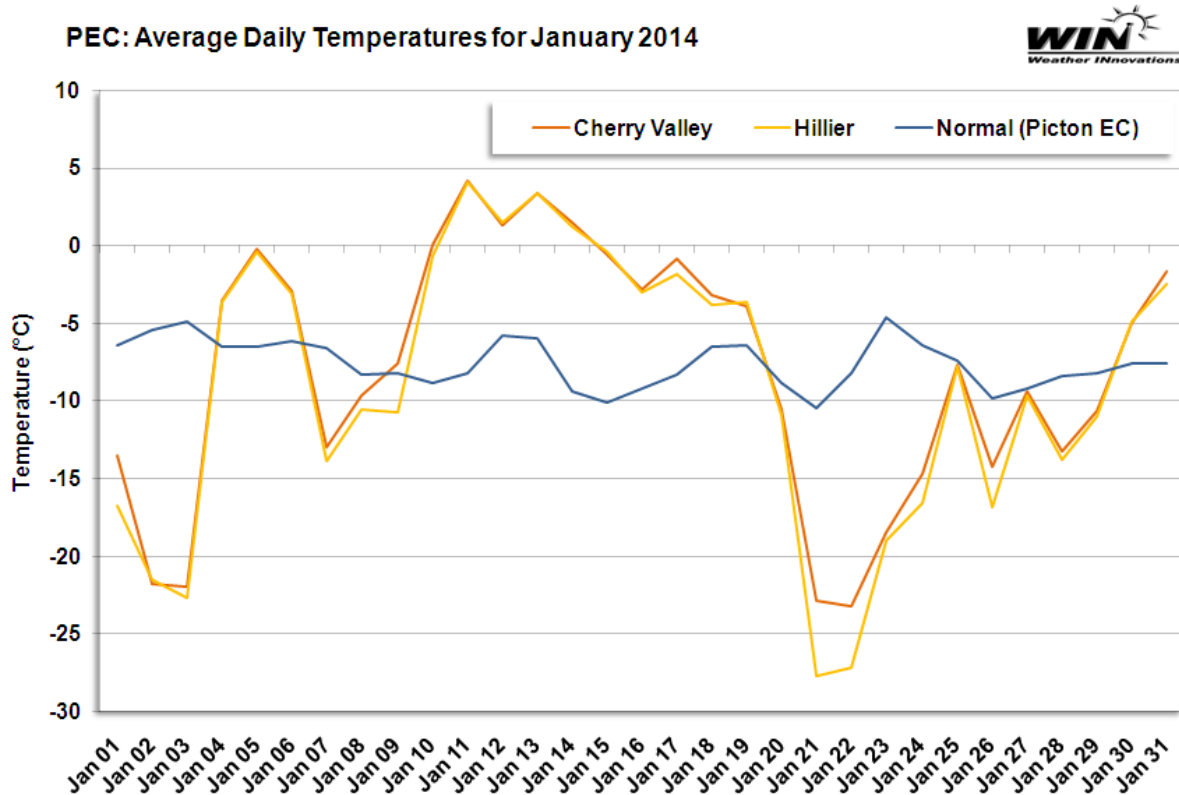


Overview

The much colder-than-normal December temperatures experienced in Prince Edward County continued into January 2014. This was in direct contrast to the previous two years, which experienced warmer-than-normal temperatures. Average monthly temperatures were -7.9°C at Cherry Valley and -8.8°C at Hillier (compared to -3.3°C at Cherry Valley and -3.6°C at Hillier in 2013). Accordingly, the average monthly temperatures were 1.2°C – 2.9°C below normal for this appellation, compared to 3.1°C – 3.4°C above normal in 2013. These statistics are based on Environment Canada’s 30-year normal for Picton. This summary illustrates minimum January 2014 temperatures, as well as the icewine harvest opportunities that arose. For this report, icewine hours are defined as instances when the average hourly temperature ranged between -8.0°C and -12.0°C , inclusive.





Temperature Analysis

The January 2014 monthly minimum temperature for each site was -28.4°C at the Cherry Valley station (compared to -23.3°C in 2013) and -36.7°C at the low-lying Hillier station (compared to -23.6°C in 2013). The coldest temperature occurred on the 22nd of January. Note that there were a significantly greater-than-normal number of days when the minimum temperature was below -10°C and -20°C . There were 18

days when temperatures, at one or more stations, dipped into ice wine temperature ranges (compared to 16 days in January 2013).

PEC: January 2014 Daily Minimums		
Date	Cherry Valley	Hillier
	1-Jan	-20.4
2-Jan	-22.8	-22.8
3-Jan	-25.4	-29.1
4-Jan	-18.3	-17.8
5-Jan	-2.1	-2.4
6-Jan	-12	-13.7
7-Jan	-15.5	-17
8-Jan	-11.1	-13
9-Jan	-11.2	-19.7
10-Jan	-3.1	-15.3
11-Jan	1.6	2.3
12-Jan	-0.2	-0.3
13-Jan	-0.1	-0.2
14-Jan	-3.7	-5.9
15-Jan	-3.3	-4.8
16-Jan	-5.4	-7.2
17-Jan	-4.2	-8.9
18-Jan	-7.3	-9.2
19-Jan	-6.5	-6
20-Jan	-20.2	-24.7
21-Jan	-26.3	-35.9
22-Jan	-28.4	-36.7
23-Jan	-23.1	-27.8
24-Jan	-24.1	-31.3
25-Jan	-16.4	-17.9
26-Jan	-25.4	-30.5
27-Jan	-17.2	-18.3
28-Jan	-17.6	-23.1
29-Jan	-12.9	-13.3
30-Jan	-7.9	-9.3
31-Jan	-6.8	-12.6

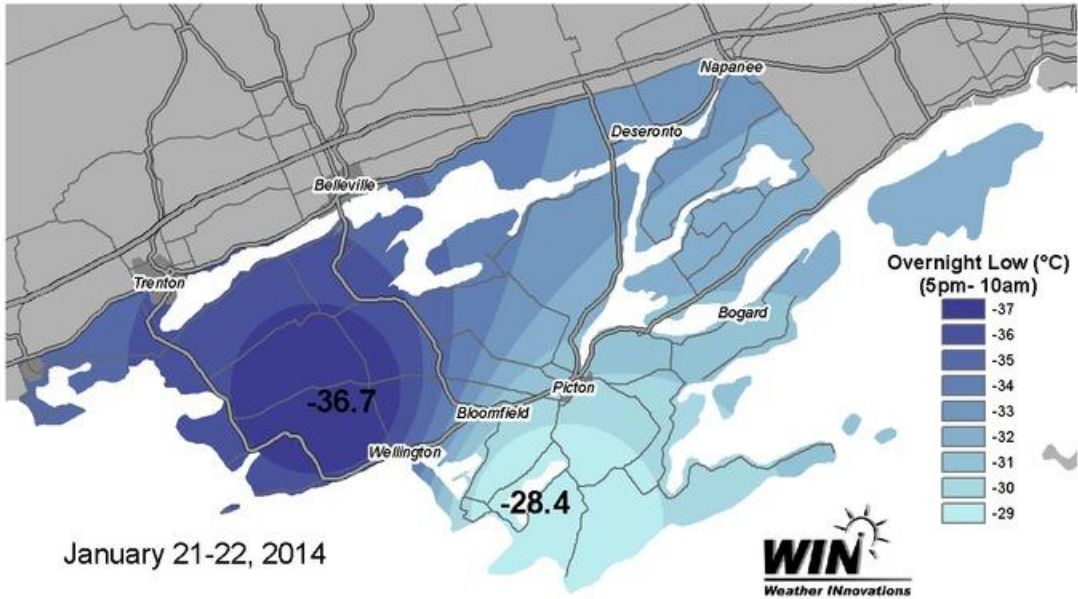
	Days with Icewine Temperatures
	Monthly Minimum

PEC: January 2014 Daily Temperatures Compared to Normal

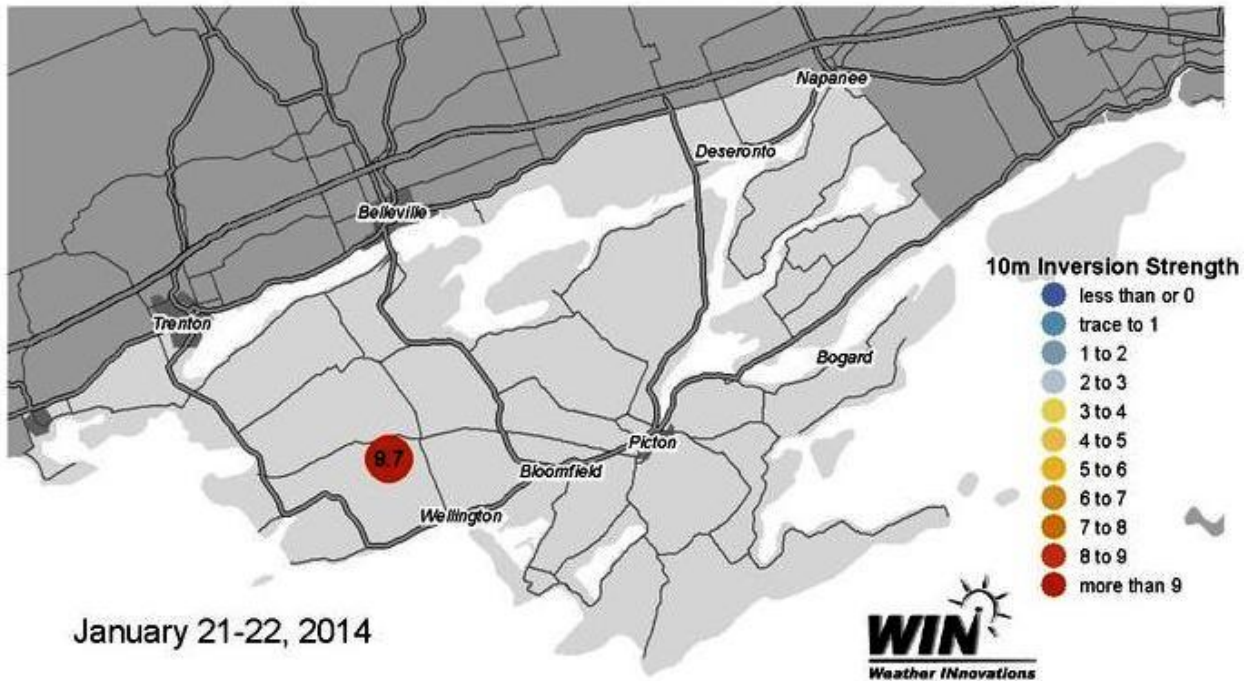
	Cherry Valley	Hillier	Normal (Picton)
Days with Maximum Temperature:			
<= 0 °C	19	19	18.3
> 0 °C	12	12	12.8
> 10 °C	0	0	0.3
> 20 °C	0	0	0
> 30 °C	0	0	0
> 35 °C	0	0	0
Days with Minimum Temperature:			
> 0 °C	1	1	1.9
<= 2 °C	31	30	30.4
<= 0 °C	30	30	29.1
<= -2 °C	28	28	25.8
<= -10 °C	18	20	16.2
<= -20 °C	9	10	4.7
<= -30 °C	0	4	0.5

Inversion Strength

The following 2 figures show the coldest January night: January 21-22. Note that this night had a suitable inversion strength for running wind machines.

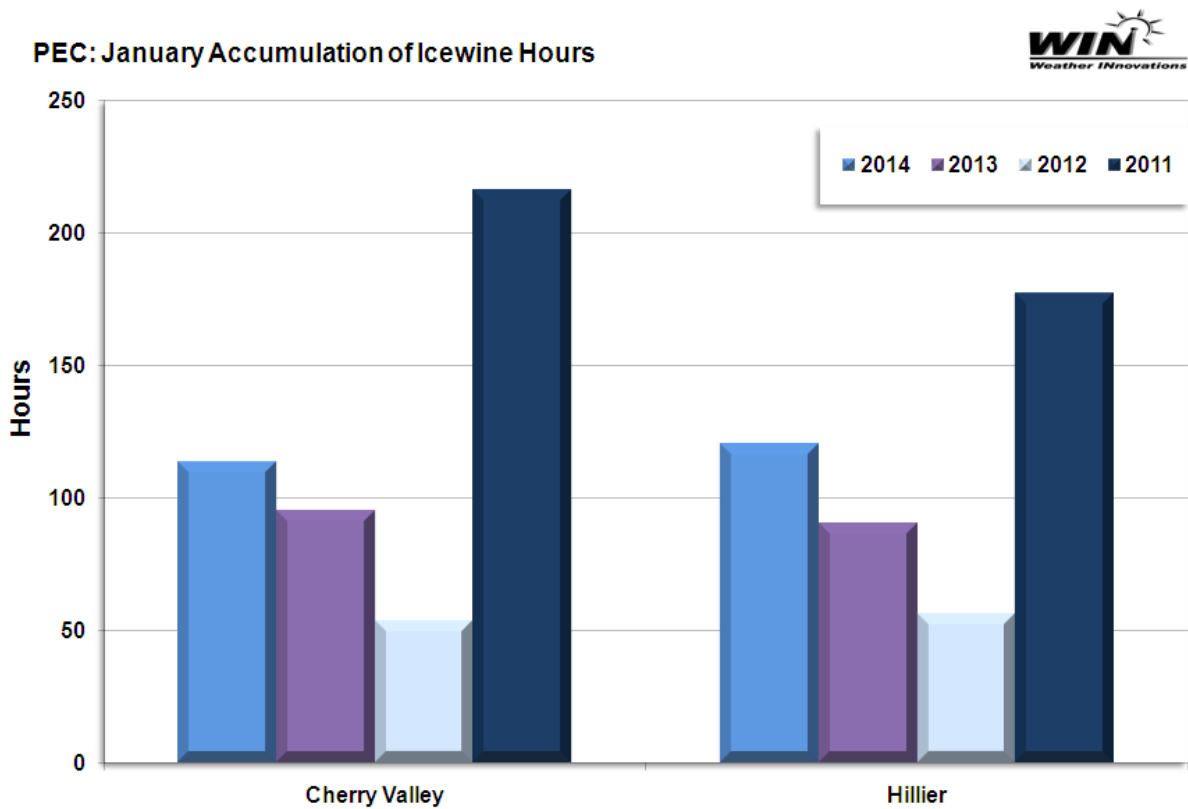


These **10m Inversion Strengths** were present during the 15-minute period at which the overnight low was reached.

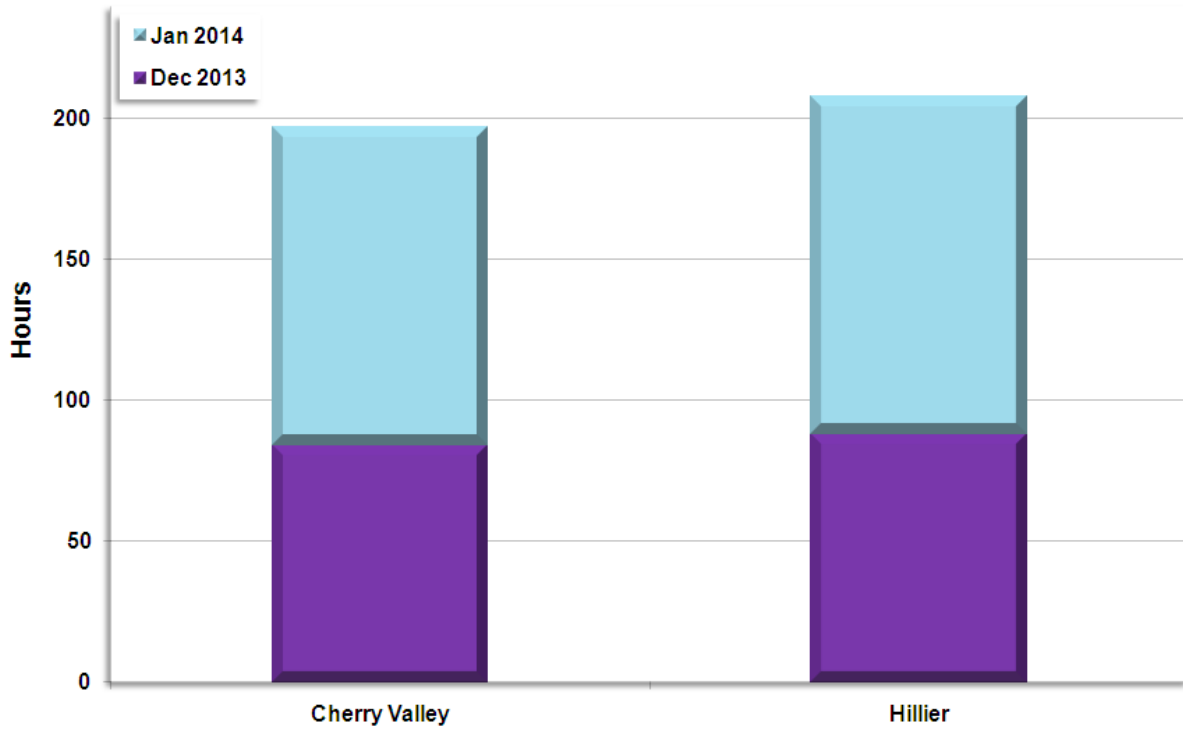


Icewine Hours Analysis

As seen in the following two figures, all of the stations accumulated a greater number of icewine hours than in 2013 and 2012, but much fewer than in 2011. A total of 113 icewine hours were recorded at the Cherry Valley station (compared to 95 in 2013) and 120 icewine hours at the Hillier station (compared to 90 in 2013). The 2013/2014 two month accumulations totaled between 197 and 208 hours. The following figures illustrate how the accumulation of icewine hours differed between the two sites.



PEC: Winter 2013/2014 Accumulation of Icewine Hours



Summary

January 2014 temperatures were significantly below normal in the Prince Edward County appellation; average temperatures for the month were 1.2°C to 2.9°C below the 30-year normal. The coldest event took place on the 22nd, with the coldest January temperature reaching -36.7°C at the low-lying Hillier station. January 2014 provided a suitable number of opportunities for harvesting icewine grapes, following a suitable number of hours accumulated in December 2013. These conditions provided ample harvest opportunities for growers producing icewine this year.