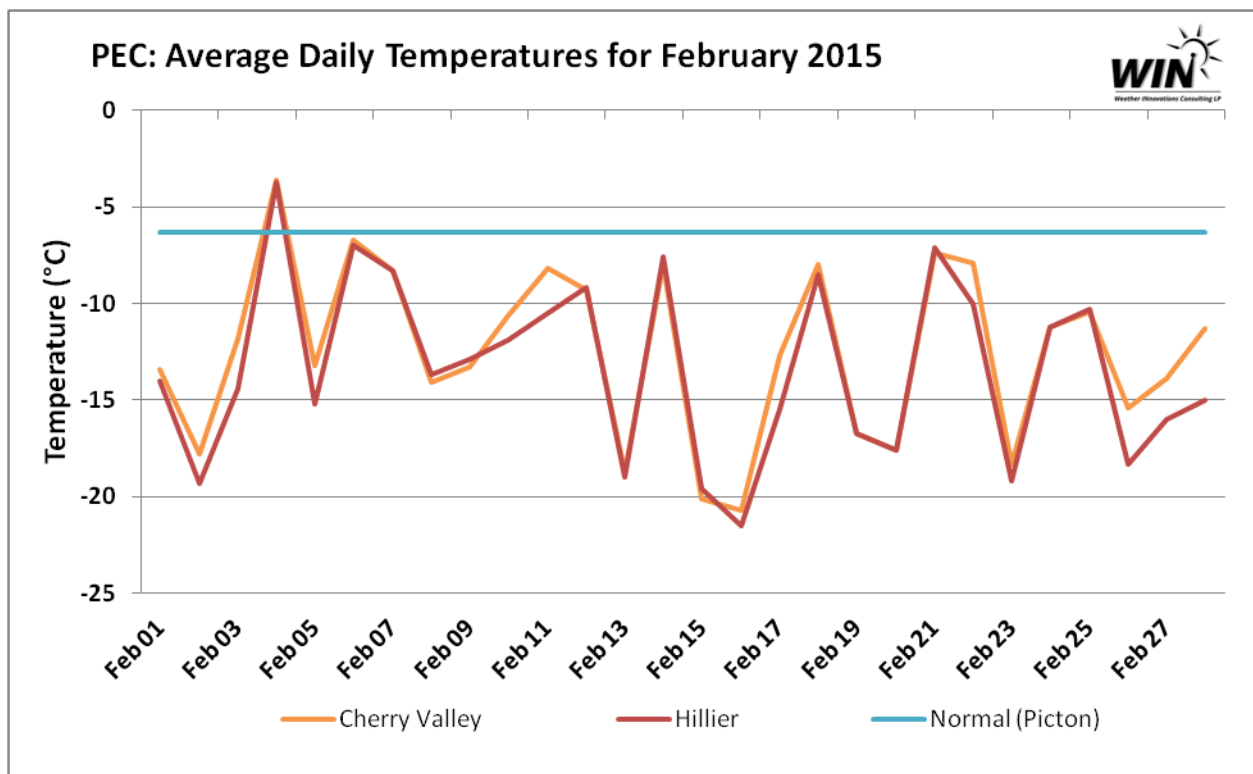




February 2015

Overview

The colder-than-normal temperatures continued into February 2015. Average temperatures were -12.5°C at Cherry Valley and -13.3°C at Hillier, compared to -7.4°C at Cherry Valley and -8.4°C at Hillier in 2014. Accordingly, the average monthly temperatures were 6.2°C to 7°C below normal for this appellation, compared to 1.1°C to 2.1°C below normal in 2014. These statistics are based on Environment Canada's 30-year normal for Picton. This summary illustrates February 2015 temperatures and icewine hours. For this report, icewine hours are define as instances when the average hourly temperature ranged between -8.0°C and -12.0°C , inclusive.



Temperature Analysis

The February 2015 monthly minimum temperature for each station was -28.2°C at the Cherry Valley station (compared to -22.5°C in 2014) and -31.5°C at the Hillier station (compared to -32.8°C in 2014). There were 23 days (compared to 21 days in 2014) when temperatures at one or more stations dipped into icewine temperature ranges. These temperature characteristics are illustrated in the following figures.



PEC: February 2015 Daily Minimums

Date	Cherry Valley	Hillier
1-Feb	-18.3	-18.1
2-Feb	-23.9	-30.4
3-Feb	-23.4	-31.5
4-Feb	-7.4	-7.5
5-Feb	-20.1	-29.2
6-Feb	-17.2	-24.6
7-Feb	-12.7	-12.6
8-Feb	-15.2	-14.6
9-Feb	-14.5	-13.9
10-Feb	-14.7	-20.6
11-Feb	-15	-22.8
12-Feb	-20.5	-22.1
13-Feb	-25.2	-28.4
14-Feb	-13.5	-13.4
15-Feb	-24.2	-24.3
16-Feb	-28.2	-29.5
17-Feb	-18.7	-24.7
18-Feb	-10.3	-13
19-Feb	-21.5	-22.8
20-Feb	-23.8	-24.7
21-Feb	-12.6	-12.4
22-Feb	-14.2	-23.1
23-Feb	-21.5	-31.3
24-Feb	-19.3	-24.1
25-Feb	-17.7	-24.8
26-Feb	-20.1	-29.4
27-Feb	-20.9	-26.7
28-Feb	-21.5	-29.8



	Days with Ice Wine Temperatures
	Monthly Minimum



PEC: February 2015 Daily Temperatures Compared to Normal

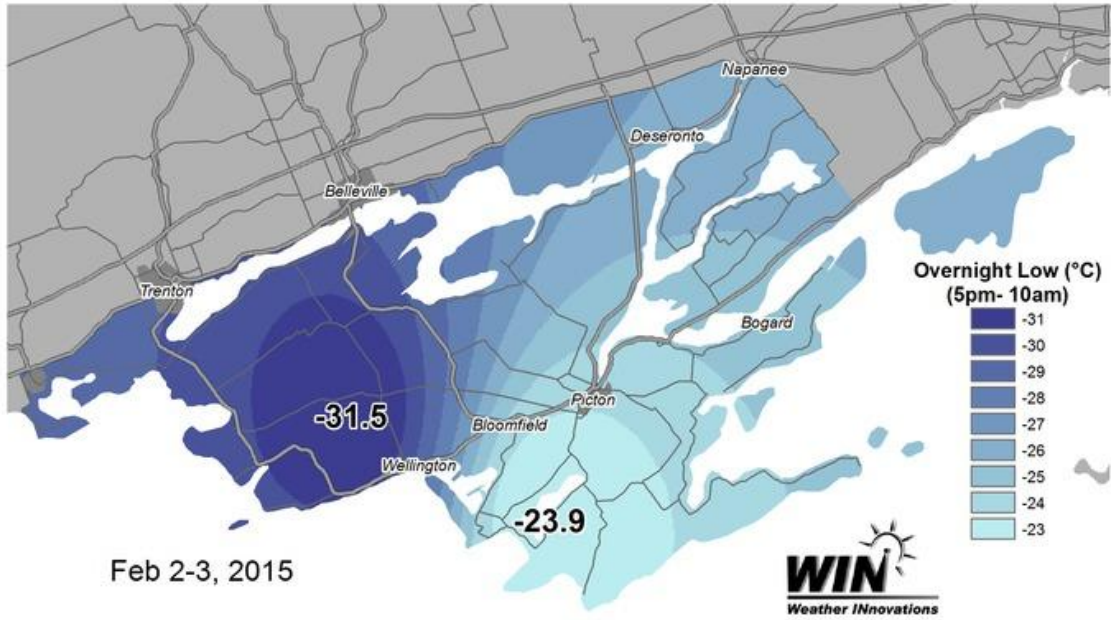
	Cherry Valley	Hillier	Normal (Picton)
Days with Maximum Temperature:			
<= 0 °C	28	27	16.8
> 0 °C	0	1	11.4
> 10 °C	0	0	0.2
> 20 °C	0	0	0
> 30 °C	0	0	0
> 35 °C	0	0	0
Days with Minimum Temperature:			
> 0 °C	0	0	2.2
<= 2 °C	28	28	27.4
<= 0 °C	28	28	26
<= -2 °C	28	28	23.1
<= -10 °C	27	27	15.2
<= -20 °C	13	20	3.6
<= -30 °C	0	3	0.2



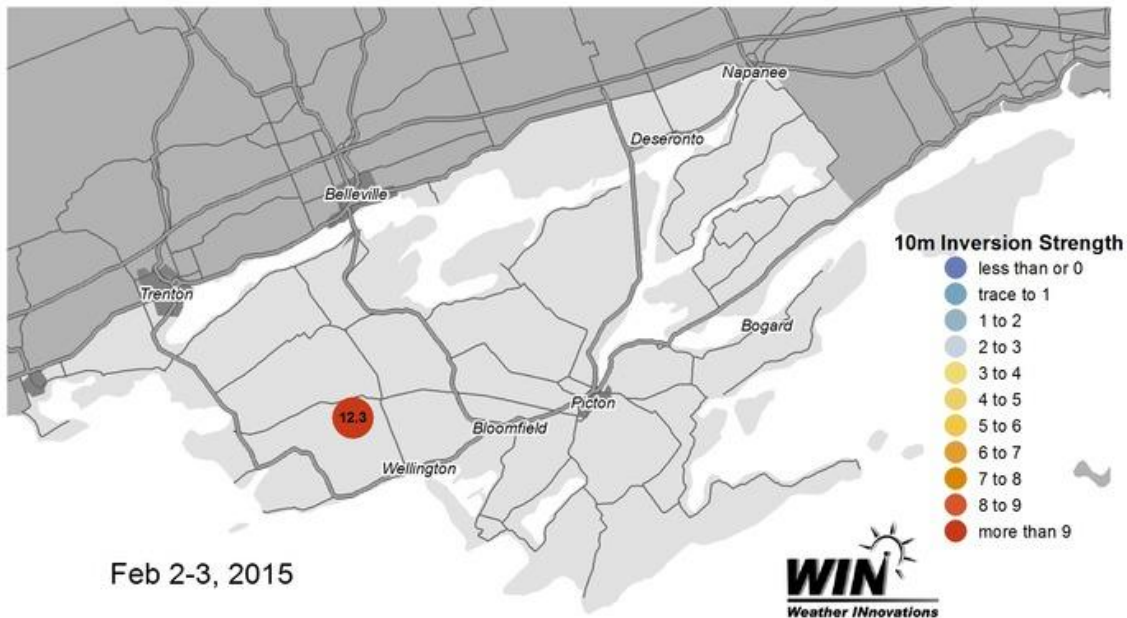


Inversion Strength

The following four figures show two of the coldest February nights: February 2-3 and 15-16. Note that the locations that experienced the lowest temperature also typically had strong 10 m inversion strengths.



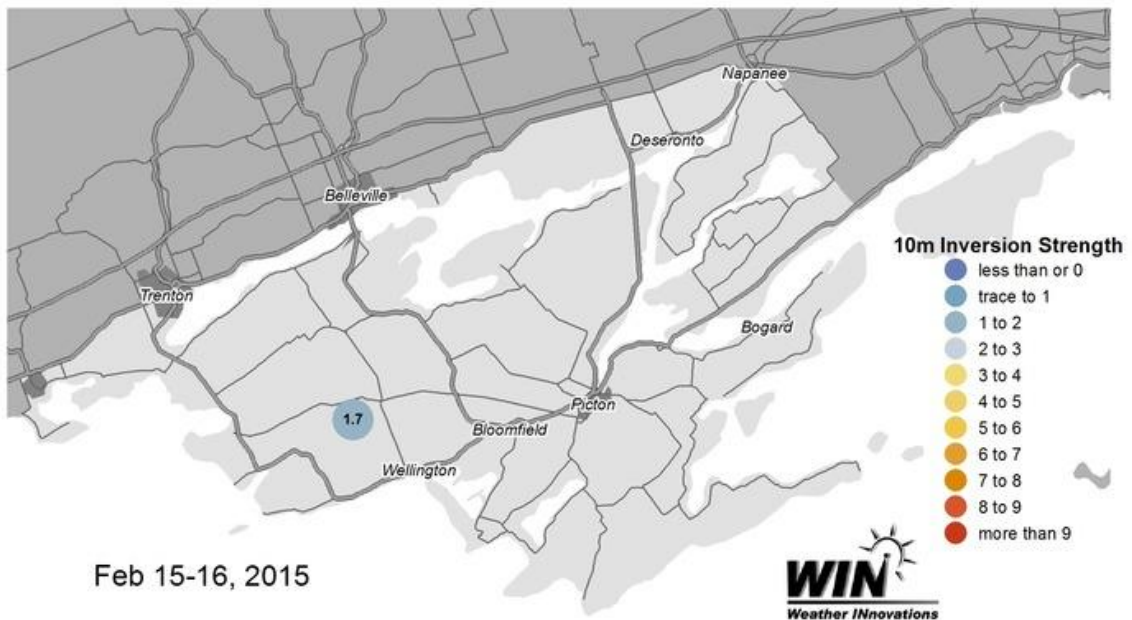
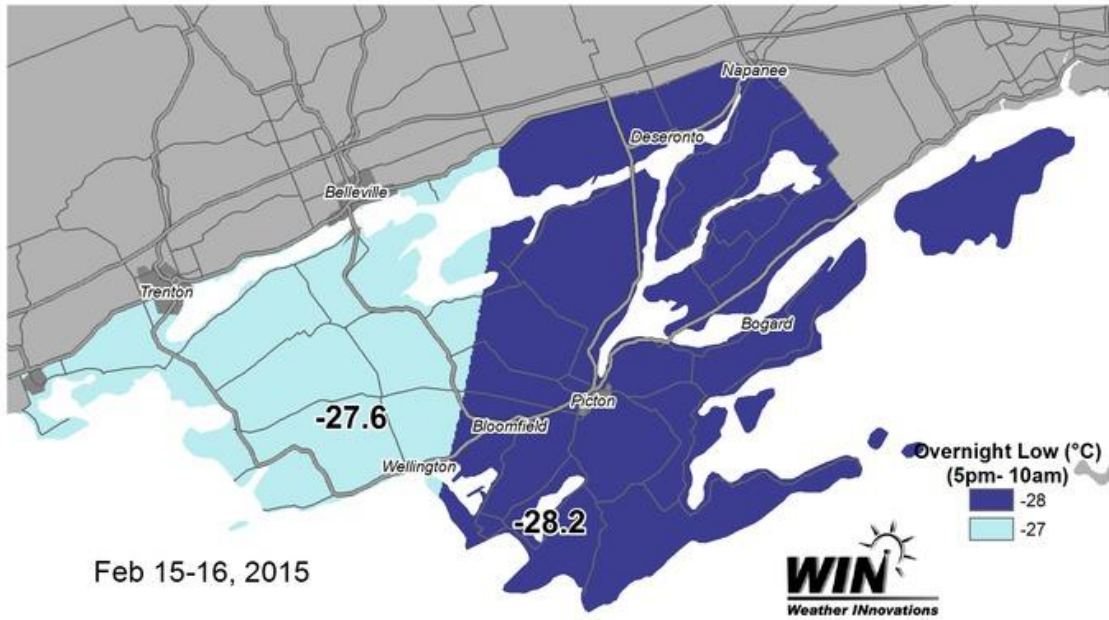
Feb 2-3, 2015



Feb 2-3, 2015



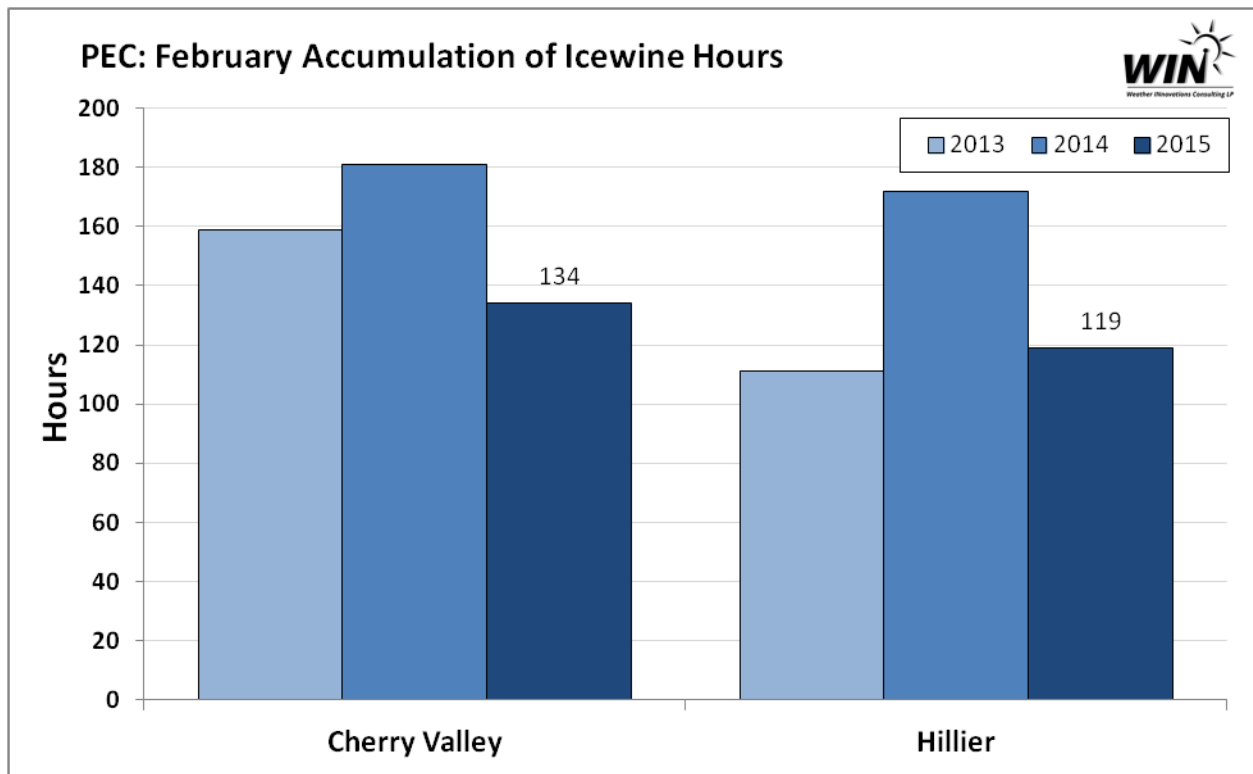
Weather INnovations Consulting LP PO Box 23005, Chatham, ON, N7L 0B1

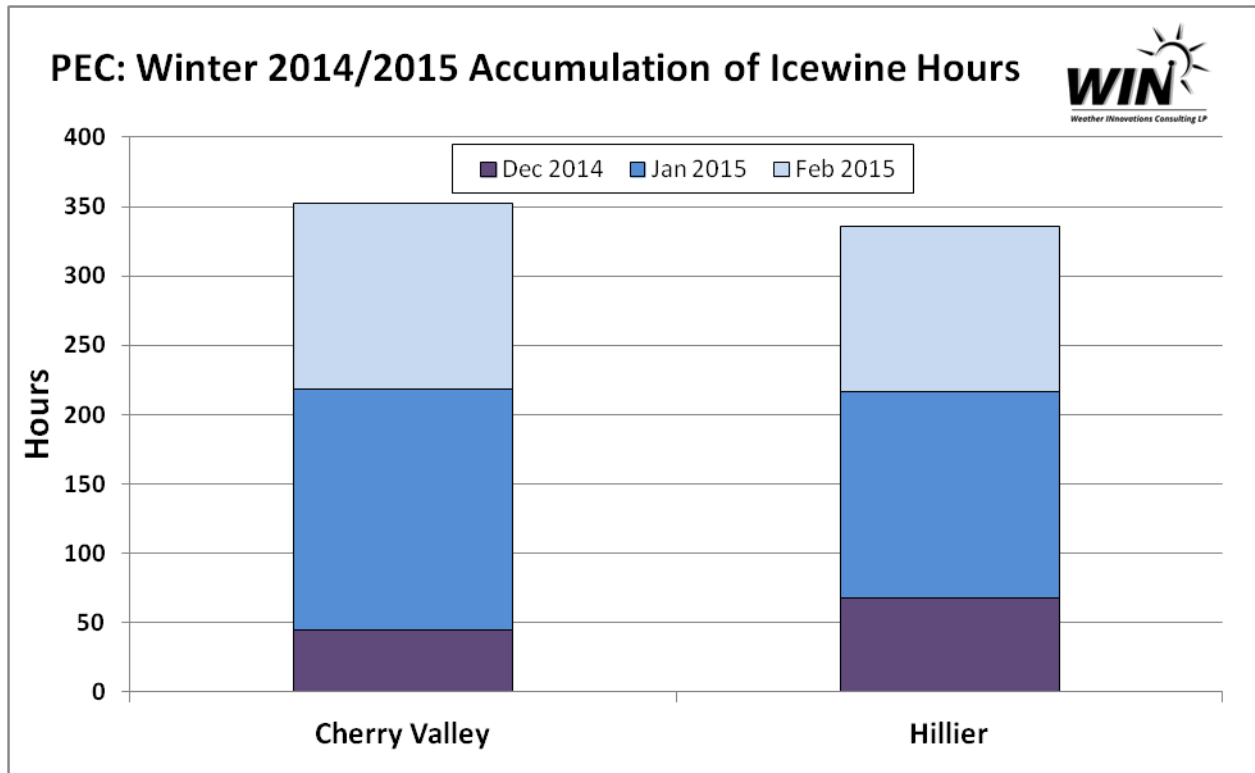




Icewine Hours Analysis

In February 2015, Cherry Valley recorded 134 icewine hours and Hillier recorded 119 icewine hours (compared to 178 hours at Cherry Valley and 167 hours at Hillier in 2014). The combined icewine hour totals over the 2014/2015 winter equaled 352 hours at Cherry Valley and 336 hours at Hillier (compared to 375 hours in the previous winter). The following figures illustrate the variability of accumulated icewine hours within the appellation.





Summary

February 2015 temperatures were well below normal in the Prince Edward County appellation. Average temperatures for the month were 6.2 °C to 7 °C below the 30-year normal. The coldest event took place on February 3 with temperatures reaching -31.5 °C at Hillier. Ample icewine harvest opportunities occurred throughout this winter.