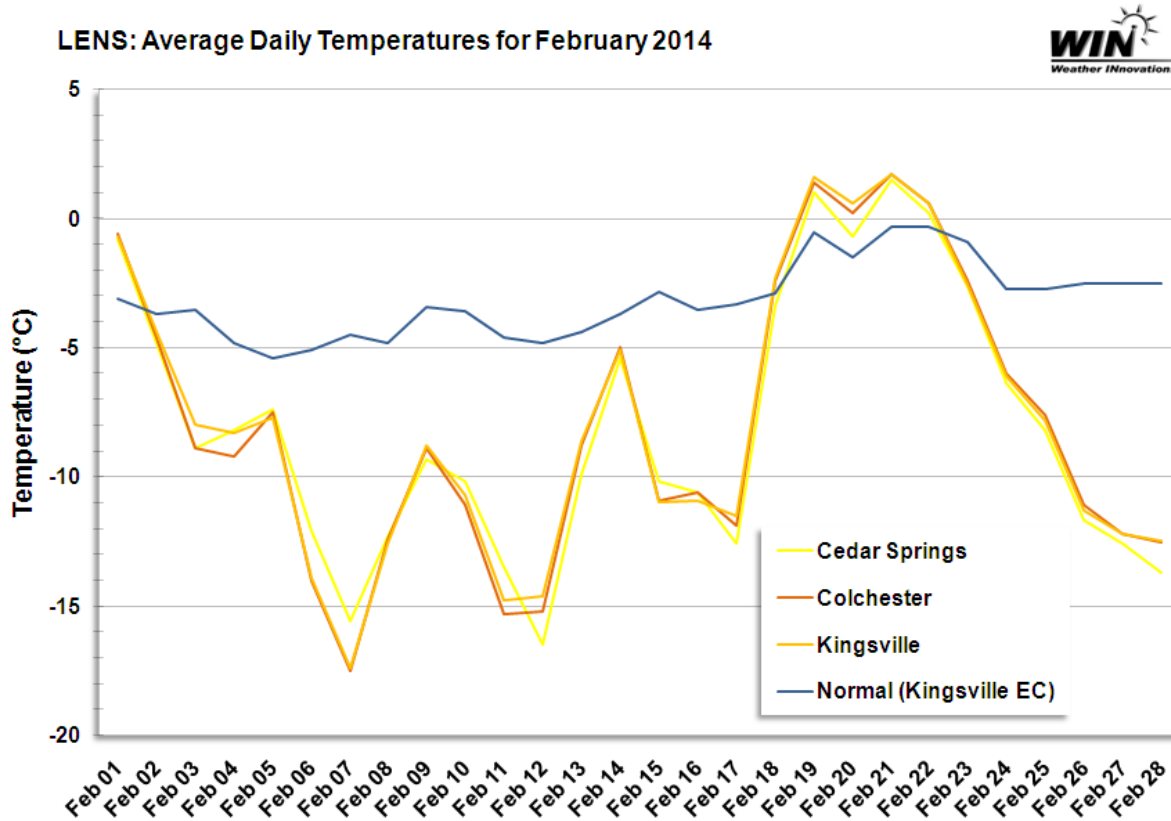


Overview

The colder-than-normal temperatures experienced this winter continued into February 2014. Average monthly temperatures were -8.0°C at Cedar Springs, -8.2°C at Colchester and -7.8°C at Kingsville (compared to -4.0°C at Cedar Springs, -3.2°C at Colchester and -3.6°C at Kingsville in 2013). Accordingly, the average monthly temperatures were 4.2°C below normal for this appellation, compared to near normal in 2013. These statistics are based on Environment Canada's 30-year normal for Kingsville. This summary illustrates February 2014 temperatures and icewine hours. For this report, icewine hours are defined as instances when the average hourly temperature ranged between -8.0°C and -12.0°C, inclusive.



Temperature Analysis

The February 2014 monthly minimum temperature for each site was: -21.8°C at the Cedar Springs station; -26.1°C at the Colchester station and -24.0°C at the Kingsville station (compared to -14.2°C, -17.7°C and -18.2°C, respectively, in 2013). These monthly minimum temperatures occurred on the 12th, 11th and 17th of February, respectively. Note that there were a significantly greater-than-normal number of days when the minimum temperature was below -10°C and -20°C. There were 21 days (compared to 12 in 2013) when temperatures at one or more stations, dipped into icewine temperature ranges. These temperature characteristics are shown in the following figures.

LENS: February 2014 Daily Temperatures Compared to Normal				
	Cedar Springs	Colchester	Kingsville	Normal (Kingsville)
Days with Maximum Temperature:				
<= 0 °C	23	22	21	13
> 0 °C	5	6	7	15.3
> 10 °C	0	0	0	0.6
> 20 °C	0	0	0	0
> 30 °C	0	0	0	0
> 35 °C	0	0	0	0
Days with Minimum Temperature:				
> 0 °C	0	1	1	2.9
<= 2 °C	28	28	28	27.6
<= 0 °C	28	27	27	25.4
<= -2 °C	26	26	26	20.2
<= -10 °C	18	19	18	9.5
<= -20 °C	2	6	4	0.5
<= -30 °C	0	0	0	0

LENS: February 2014 Daily Minimums

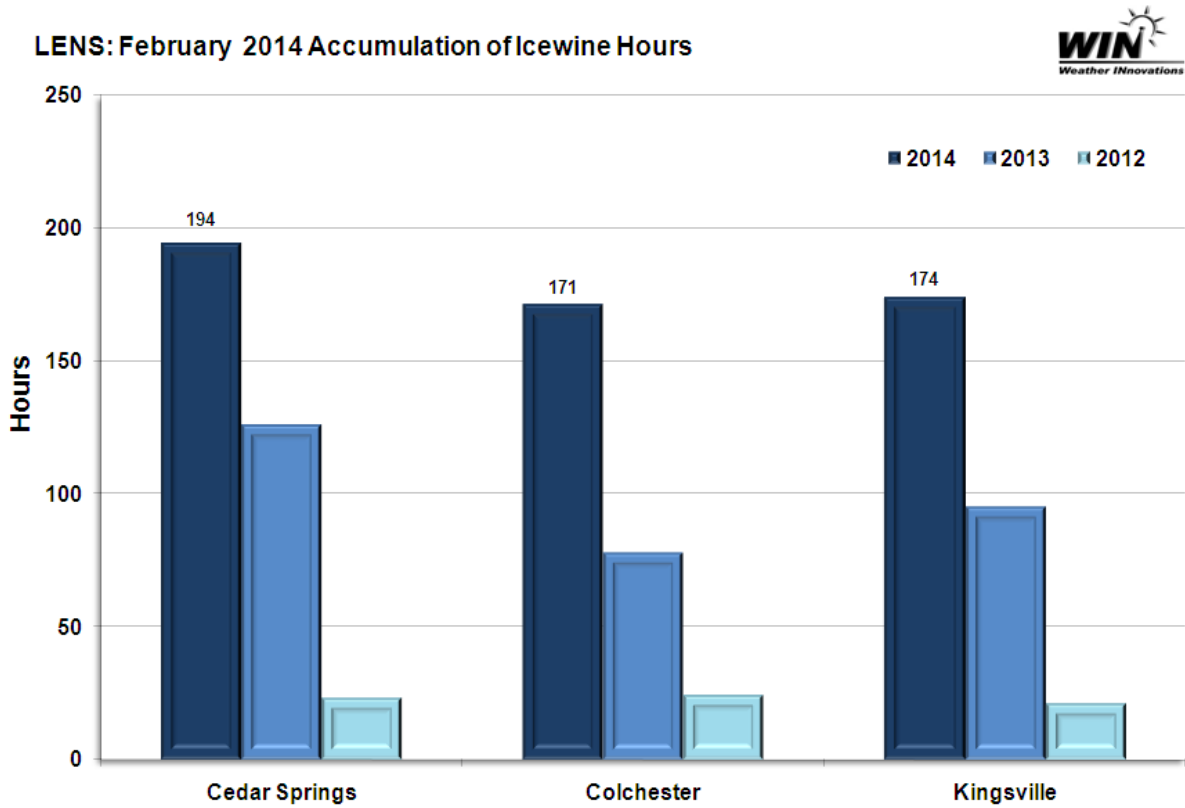
Date	Cedar Springs	Colchester	Kingsville
1-Feb	-2.3	-2.5	-2.6
2-Feb	-7.9	-11.2	-6.8
3-Feb	-11.8	-15.5	-11.3
4-Feb	-12.4	-16.2	-13.5
5-Feb	-12.9	-19.3	-17.1
6-Feb	-16.3	-21	-19.3
7-Feb	-18.9	-21.1	-20.6
8-Feb	-16.9	-16.9	-17.6
9-Feb	-11.3	-11.6	-11
10-Feb	-12.3	-18.8	-17.4
11-Feb	-19.5	-26.1	-23.1
12-Feb	-21.8	-25	-23.7
13-Feb	-14.4	-14.2	-14
14-Feb	-7.8	-8.4	-8.7
15-Feb	-13.7	-19.8	-16.7
16-Feb	-16.1	-22.9	-19
17-Feb	-20.4	-24.5	-24
18-Feb	-7.3	-5.9	-6
19-Feb	-2.6	-2.5	-2.9
20-Feb	-4	-4.1	-3.5
21-Feb	-0.2	0.3	0.2
22-Feb	-1.2	-0.1	-0.1
23-Feb	-6	-6.2	-6.2
24-Feb	-8.2	-7.1	-7.2
25-Feb	-10.8	-11	-10.9
26-Feb	-15.2	-14	-13.7
27-Feb	-16.8	-17.3	-15.8
28-Feb	-19.5	-18.9	-18.6

	Days with Icewine Temperatures
	Monthly Minimum

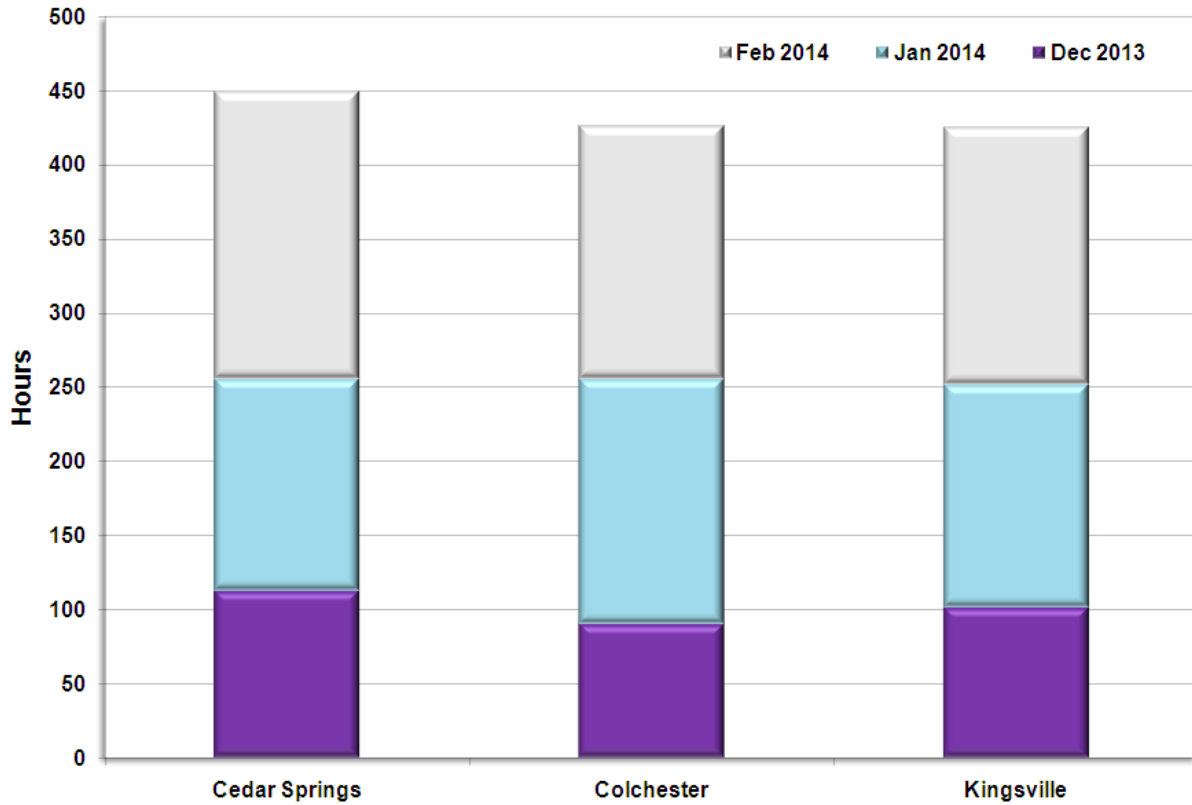


Icewine Hours Analysis

A total of 194 icewine hours were recorded at the Cedar Springs station, while the Colchester station recorded 171 hours and the Kingsville station recorded 174 hours. The combined icewine hour totals for the 2013/2014 winter ranged between 425 and 449 hours (compared to only 151 and 234 hours in the previous winter). The following figures illustrate the icewine harvesting hour variability across the appellation.



LENS: Winter 2013/2014 Accumulation of Icewine Hours



Summary

February 2014 temperatures were significantly below normal in the Lake Erie North Shore appellation. The coldest event took place on February 11th, with the coldest temperature reaching -26.1°C at the Colchester station. Ample ice wine harvest opportunities arose already in December and January.